

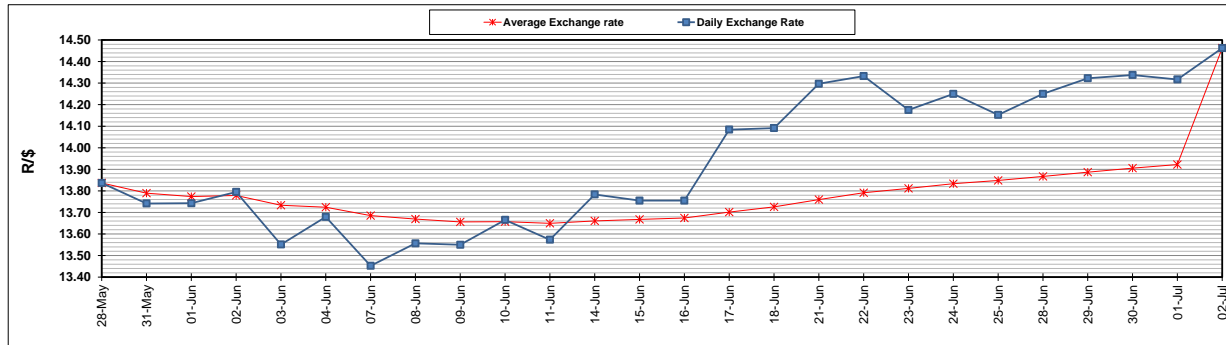
	PETROL 95 ULP	PETROL 93 ULP & LRP	DIESEL 0.05%	DIESEL 0.005%	ILL. PAR.
GAUTENG PUMP PRICE (SA c/l) AS FROM 07/07/2021	1,739.000	1,720.000	-	-	-
WHOLESALE PRICE (SA c/l) AS FROM 07/07/2021	-	-	1,508.620	1,512.020	913.488
SINGLE NATIONAL MAXIMUM RETAIL PRICE	-	-	-	-	1,150.000
BASIC FUEL PRICE - 02/07/2021 (SA c/l)	823.892	810.321	772.589	776.147	748.829
PRESS RELEASE CONTRIBUTION TO BFP 02/07/2021 - 02/07/2021 (SA c/l)	717.170	705.170	679.630	684.030	664.128
UNIT OVER/(UNDER) RECOVERY - 02/07/2021 (SA c/l)	(106.722)	(105.151)	(92.959)	(92.117)	(84.701)
AVERAGE BASIC FUEL PRICE 02/07/2021 - 02/07/2021	823.892	810.321	772.589	776.147	748.829
AVERAGE UNIT OVER/(UNDER) RECOVERY 02/07/2021 - 02/07/2021	(106.722)	(105.151)	(92.959)	(92.117)	(84.701)

ANALYSIS MOVEMENT OF AVERAGE OVER/(UNDER) RECOVERY

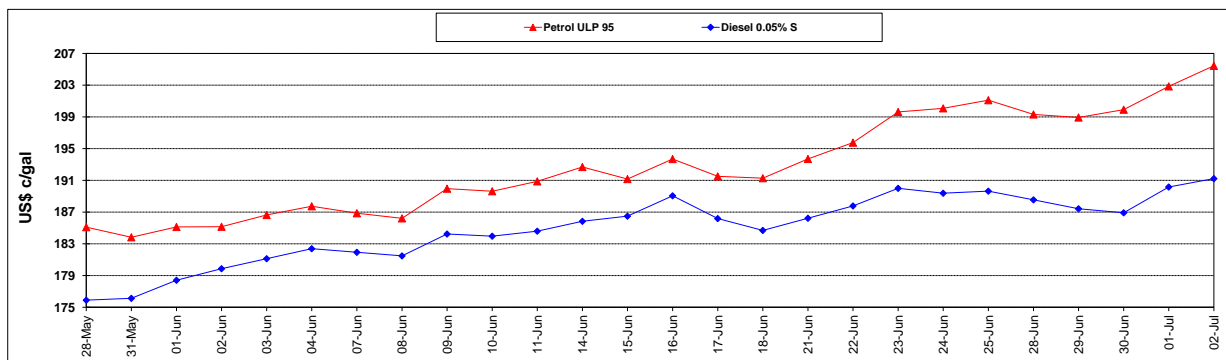
	PETROL 95	PETROL 93	DIESEL 0.05%	DIESEL 0.005%	ILL. PAR.
- MOVEMENT IN INTERNATIONAL PRODUCT PRICES	(75.925)	(74.862)	(64.080)	(63.105)	(56.710)
- MOVEMENT IN EXCHANGE RATE	(30.797)	(30.289)	(28.879)	(29.012)	(27.991)
AVERAGE UNIT OVER/(UNDER) RECOVERY 02/07/2021 - 02/07/2021	(106.722)	(105.151)	(92.959)	(92.117)	(84.701)

R/\$ EXCHANGE RATE - (R/\$14.4625- 02/07/2021)

EXCHANGE RATE USED IN BASIC FUEL PRICE



INTERNATIONAL PRODUCT PRICES OF BASKET USED IN BASIC FUEL PRICE



BASIC FUEL PRICE IN SA CENTS PER LITRE

